

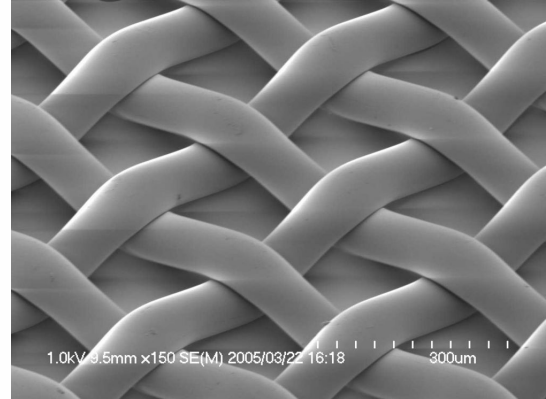
product solution

NBC ETFE Mesh

NBC's line of ethylene tetrafluoroethylene or ETFE mesh is acid and alkaline resistant and has good chemical resistance as well.

FEATURES

- 25-50% elongation to break when dry or wet
- 80-100% elasticity recovery after 3% stretching
- Weather resistant



PRODUCT OPTIONS

Mesh Specifications vary to meet a variety of applications. This mesh is available in the following ranges:

Thread Diameter

120 - 400 μ m

Mesh Count

10 - 80 per inch

Mesh Opening

197 - 2140 μ m

Pattern

Plain, Twill, Satin

Primary Treatments are optional procedures that chemically enhance the performance of the mesh or manipulate its appearance in various ways. These treatments include:

Dyeing

Dyeing changes the mesh's color for an aesthetic effect and is available with minimum orders of 5,500 yards

Calendering

Calendering creates a flatter surface and can thin out the mesh as well as affect the mesh's open area

Sputtering

Sputtering effects the electrical conductivity and enhances the anti-static property of the mesh

product solution

NBC ETFE Mesh

Secondary Treatments are optional procedures that physically manipulate the mesh to prepare it for inclusion in a custom product. These treatments include:

Die Cutting

Die cutting creates precisely cut pieces of mesh in various shapes and sizes

Welding

Welding melds pieces of the mesh together

Slitting

Slitting creates evenly divided sections of mesh

Sewing

Sewing also holds folded pieces of mesh together

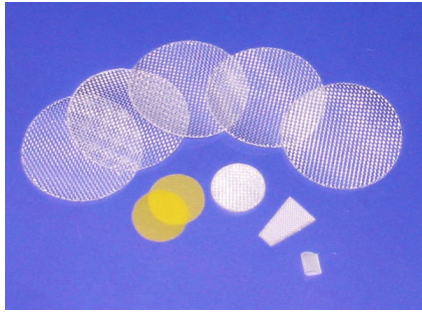
Stretching

Stretching allows easier attachment to mesh frames

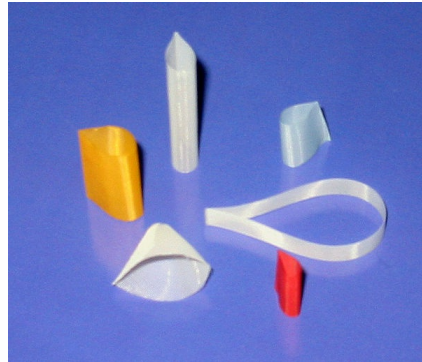
product solution

NBC ETFE Mesh

PRODUCT IMAGES



Die Cutting (Secondary Treatment)



Welding (Secondary Treatment)



Slitting (Secondary Treatment)



Sewing (Secondary Treatment)

product solution

NBC ETFE Mesh

ITEM DETAILS

MESH CODE	MESH OPENING µm	OPEN AREA (%)	WARP MESH COUNT /in	WARP MESH COUNT /in	WARP MESH COUNT /cm	WARP MESH COUNT /cm	THREAD DIAMETER µm	MESH THICKNESS µm	WEAVE TYPE	STANDARD WIDTH cm (in)
FC 0200/39PW	0200	39	80.0	80.0	31.0	31.0	120	260	PW	102 (40)
FC 0245/45PW	0245	45	70.0	70.0	27.0	27.0	120	245	PW	102 (40)
FC 0300/51PW	0300	51	60.0	60.0	24.0	24.0	120	240	PW	102 (40)
FC 0360/50PW	0360	50	50.0	50.0	20.0	20.0	150	310	PW	102 (40)
FC 0435/47PW	0435	47	40.0	40.0	16.0	16.0	200	400	PW	102 (40)
FC 0645/58PW	0645	58	30.0	30.0	12.0	12.0	200	390	PW	102 (40)
FC 1020/65PW	1020	65	20.0	20.0	8.0	8.0	250	490	PW	102 (40)
FC 2140/71PW	2140	71	10.0	10.0	4.0	4.0	400	750	PW	102 (40)