

product solution

NBC Polyester Mesh

NBC's line of Polyester or PET mesh for filtering and fashion applications is chemical resistant and has a good resistance to both acid and alkaline.

FEATURES

- 7-32% elongation when dry or wet
- 95-100% elasticity recovery when stretched 3%
- Good weather resistance

PRODUCT OPTIONS

Mesh Specifications vary to meet a variety of applications. This mesh is available in the following ranges:

Thread Diameter

27 - 410 μm

Mesh Count

15 - 508 per inch

Mesh Opening

23 - 1404 μm

Pattern

Plain, Twill, Satin

Primary Treatments are optional procedures that chemically enhance the performance of the mesh or manipulate its appearance in various ways. These treatments include:

Dyeing

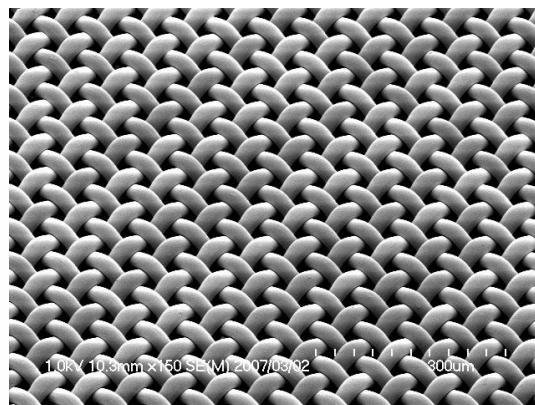
Dyeing changes the mesh's color for an aesthetic effect

Resin Coating

Coating can add an anti-static property as well as allow the mesh to be either hydrophilic or hydrophobic

Corona Treatment

Corona enhances the mesh's adhesion property and adds a hydrophilic property



product solution

NBC Polyester Mesh

Calendering

Calendering creates a flatter surface and can thin out the mesh as well as affect the mesh's open area

Sputtering

Sputtering effects the electrical conductivity and enhances the anti-static property of the mesh

Secondary Treatments are optional procedures that physically manipulate the mesh to prepare it for inclusion in a custom product. These treatments include:

Die Cutting

Die cutting creates precisely cut pieces of mesh in various shapes and sizes

Welding

Welding melds pieces of the mesh together

Slitting

Slitting creates evenly divided sections of mesh

Sewing

Sewing also holds folded pieces of mesh together

Pleating

Pleating folds the mesh together in order to correspond with potting

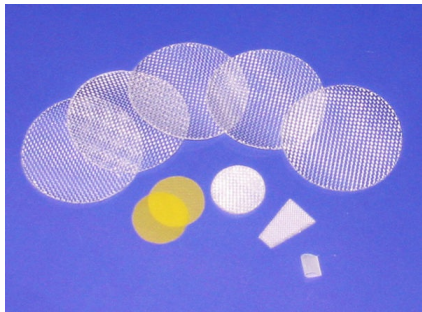
Stretching

Stretching allows easier attachment to mesh frames

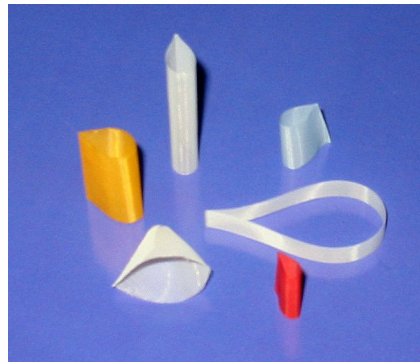
product solution

NBC Polyester Mesh

PRODUCT IMAGES



Die Cutting (Secondary Treatment)



Welding (Secondary Treatment)



Slitting (Secondary Treatment)



Sewing (Secondary Treatment)



Pleating (Secondary Treatment)

ITEM DETAILS

MESH CODE	MESH OPENING µm	OPEN AREA (%)	WARP MESH COUNT /in	WARP MESH COUNT /in	WARP MESH COUNT /cm	WARP MESH COUNT /cm	THREAD DIAMETER µm	MESH THICKNESS µm	WEAVE TYPE	STANDARD WIDTH cm (in)
PT 0018/13TW	0018	13	508.0	508.0	200.0	200.0	027	052	TW	115 (45)
PT 0020/13TW	0020	13	460.0	460.0	180.0	180.0	030	055	TW	115 (45)
PT 0022/13TW	0022	13	420.0	420.0	165.0	165.0	033	060	TW	115 (45)
PT 0023/17PW	0023	17	460.0	460.0	180.0	180.0	027	042	PW	115 (45)
PT 0025/17PW	0025	17	420.0	420.0	165.0	165.0	030	046	PW	115 (45)
PT 0027/16TW	0027	16	380.0	380.0	150.0	150.0	035	064	TW	115 (45)
PT 0028/22PW	0028	22	420.0	420.0	165.0	165.0	027	041	PW	115 (45)

product solution

NBC Polyester Mesh

MESH CODE	MESH OPENING µm	OPEN AREA (%)	WARP MESH COUNT /in	WARP MESH COUNT /in	WARP MESH COUNT /cm	WARP MESH COUNT /cm	THREAD DIAMETER µm	MESH THICKNESS µm	WEAVE TYPE	STANDARD WIDTH cm (in)
PT 0029/19PW	0029	19	380.0	380.0	150.0	150.0	033	064	PW	115 (45)
PT 0032/23PW	0032	23	380.0	380.0	150.0	150.0	030	046	PW	115 (45)
PT 0032/20PW	0032	20	355.0	355.0	140.0	140.0	035	053	PW	115 (45)
PT 0035/27PW	0035	27	380.0	380.0	150.0	150.0	027	042	PW	115 (45)
PT 0037/26PW	0037	26	355.0	355.0	140.0	140.0	030	046	PW	115 (45)
PT 0037/23PW	0037	23	330.0	330.0	130.0	130.0	035	053	PW	115 (45)
PT 0040/31PW	0040	31	355.0	355.0	140.0	140.0	027	040	PW	115 (45)
PT 0040/22PW	0040	22	300.0	300.0	118.0	118.0	040	062	PW	115 (45)
PT 0042/30PW	0042	30	330.0	330.0	130.0	130.0	030	046	PW	115 (45)
PT 0043/27PW	0043	27	305.0	305.0	120.0	120.0	035	053	PW	115 (45)
PT 0044/34PW	0044	34	334.0	334.0	131.0	131.0	027	040	PW	115 (45)
PT 0045/29PW	0045	29	305.0	305.0	120.0	120.0	033	050	PW	115 (45)
PT 0046/32PW	0046	32	315.0	315.0	124.0	124.0	030	045	PW	115 (45)
PT 0048/33PW	0048	33	305.0	305.0	120.0	120.0	030	048	PW	115 (45)
PT 0049/27PW	0049	27	270.0	270.0	106.0	106.0	040	060	PW	115 (45)
PT 0051/31PW	0051	31	280.0	280.0	110.0	110.0	035	053	PW	115 (45)
PT 0054/28TW	0054	28	250.0	250.0	98.0	98.0	045	080	TW	115 (45)
PT 0055/30PW	0055	30	255.0	255.0	100.0	100.0	040	060	PW	115 (45)
PT 0056/25TW	0056	25	225.0	225.0	88.0	88.0	055	091	TW	115 (45)
PT 0062/32PW	0062	32	230.0	230.0	90.0	90.0	045	068	PW	115 (45)
PT 0062/30PW	0062	30	225.0	225.0	88.0	88.0	048	075	PW	115 (45)
PT 0065/35PW	0065	35	230.0	230.0	90.0	90.0	040	060	PW	115 (45)
PT 0070/30PW	0070	30	200.0	200.0	79.0	79.0	055	088	PW	115 (45)
PT 0076/36PW	0076	36	200.0	200.0	79.0	79.0	048	075	PW	115 (45)
PT 0076/29PW	0076	29	180.0	180.0	71.0	71.0	063	098	PW	115 (45)

product solution

NBC Polyester Mesh

MESH CODE	MESH OPENING µm	OPEN AREA (%)	WARP MESH COUNT /in	WARP MESH COUNT /in	WARP MESH COUNT /cm	WARP MESH COUNT /cm	THREAD DIAMETER µm	MESH THICKNESS µm	WEAVE TYPE	STANDARD WIDTH cm (in)
PT 0079/39PW	0079	39	200.0	200.0	79.0	79.0	045	068	PW	115 (45)
PT 0084/35PW	0084	35	180.0	180.0	71.0	71.0	055	088	PW	115 (45)
PT 0090/41PW	0090	41	180.0	180.0	71.0	71.0	048	076	PW	115 (45)
PT 0093/44PW	0093	44	180.0	180.0	71.0	71.0	045	070	PW	115 (45)
PT 0094/35PW	0094	35	160.0	160.0	63.0	63.0	063	105	PW	115 (45)
PT 0104/38PW	0104	38	150.0	150.0	59.0	59.0	063	105	PW	115 (45)
PT 0094/35PW	0094	35	160.0	160.0	63.0	63.0	063	105	PW	115 (45)
PT 0104/38PW	0104	38	150.0	150.0	59.0	59.0	063	105	PW	115 (45)
PT 0108/46PW	0108	46	160.0	160.0	63.0	63.0	048	080	PW	115 (45)
PT 0112/44PW	0112	44	150.0	150.0	59.0	59.0	055	088	PW	115 (45)
PT 0116/41PW	0116	41	140.0	140.0	55.0	55.0	063	105	PW	115 (45)
PT 0118/49PW	0118	49	150.0	150.0	59.0	59.0	048	076	PW	115 (45)
PT 0120/51PW	0120	51	150.0	150.0	59.0	59.0	045	072	PW	115 (45)
PT 0130/48PW	0130	48	135.0	135.0	53.0	53.0	055	095	PW	115 (45)
PT 0130/41PW	0130	41	125.0	125.0	49.0	49.0	071	116	PW	115 (45)
PT 0130/38PW	0130	38	120.0	120.0	47.0	47.0	080	137	PW	115 (45)
PT 0135/53PW	0135	53	135.0	135.0	53.0	53.0	048	079	PW	115 (45)
PT 0140/55PW	0140	55	135.0	135.0	53.0	53.0	045	073	PW	115 (45)
PT 0145/48PW	0145	48	120.0	120.0	47.0	47.0	063	105	PW	115 (45)
PT 0150/42PW	0150	42	110.0	110.0	43.0	43.0	080	132	PW	115 (45)
PT 0155/53PW	0155	53	120.0	120.0	47.0	47.0	055	095	PW	115 (45)
PT 0160/58PW	0160	58	120.0	120.0	47.0	47.0	048	080	PW	115 (45)
PT 0165/60PW	0165	60	120.0	120.0	47.0	47.0	045	073	PW	115 (45)
PT 0170/46PW	0170	46	100.0	100.0	39.0	39.0	080	134	PW	115 (45)
PT 0180/51PW	0180	51	100.0	100.0	39.0	39.0	071	122	PW	115 (45)

product solution

NBC Polyester Mesh

MESH CODE	MESH OPENING µm	OPEN AREA (%)	WARP MESH COUNT /in	WARP MESH COUNT /in	WARP MESH COUNT /cm	WARP MESH COUNT /cm	THREAD DIAMETER µm	MESH THICKNESS µm	WEAVE TYPE	STANDARD WIDTH cm (in)
PT 0195/60PW	0195	60	100.0	100.0	39.0	39.0	055	095	PW	115 (45)
PT 0200/50PW	0200	50	90.0	90.0	35.0	35.0	080	137	PW	115 (45)
PT 0210/55PW	0210	55	90.0	90.0	35.0	35.0	071	125	PW	115 (45)
PT 0215/46PW	0215	46	80.0	80.0	31.0	31.0	100	170	PW	115 (45)
PT 0235/42PW	0235	42	70.0	70.0	27.0	27.0	125	240	PW	115 (45)
PT 0245/59PW	0245	59	80.0	80.0	31.0	31.0	071	125	PW	115 (45)
PT 0270/41PW	0270	41	60.0	60.0	24.0	24.0	150	260	PW	115 (45)
PT 0290/64PW	0290	64	70.0	70.0	27.0	27.0	071	125	PW	115 (45)
PT 0295/49PW	0295	49	60.0	60.0	24.0	24.0	125	230	PW	115 (45)
PT 0305/36PW	0305	36	50.0	50.0	20.0	20.0	200	380	PW	107 (42)
PT 0435/47PW	0435	47	40.0	40.0	16.0	16.0	200	400	PW	107 (42)
PT 0595/49PW	0595	49	30.0	30.0	12.0	12.0	250	500	PW	107 (42)
PT 0950/56PW	0950	56	20.0	20.0	8.0	8.0	320	630	PW	107 (42)
PT 1400/60PW	1400	60	14.0	14.0	6.0	6.0	410	820	PW	107 (42)