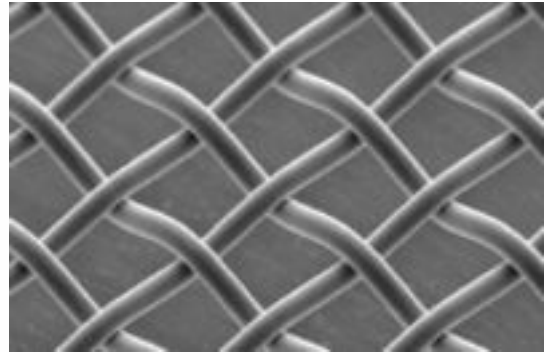


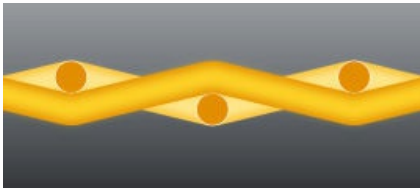
product solution

# Asada Supermesh-Type HS & SHS Metal Mesh

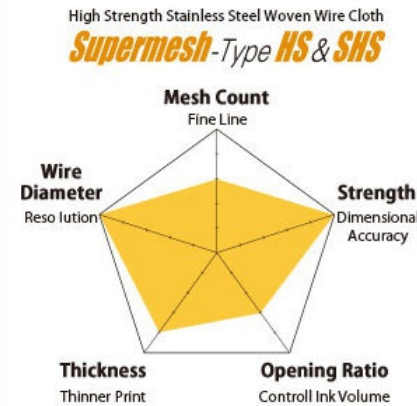
HS & SHS Mesh is suitable for high viscosity paste. The wire material has 3 times higher strength than BS and only 5% elongation. The wire thread is woven at an open ratio of 60%. It is appropriate for solder or paste laydown.



## PRODUCT IMAGES



Cross Section View



HS & SHS Mesh Characteristics Chart

product solution

# Asada Supermesh-Type HS & SHS Metal Mesh

## ITEM DETAILS

MESH CODE	MESH COUNT /in	MESH COUNT /cm	WIRE DIAMETER in	WIRE DIAMETER mm	MESH OPENING in	MESH OPENING mm	OPEN AREA %	STANDARD THICKNESS $\mu$ m	LIGHT CALENDERING THICKNESS $\mu$ m	MEDIUM CALENDERING THICKNESS $\mu$ m	HEAVY CALENDERING THICKNESS $\mu$ m
SHS-380/14	380	150	0.0006	0.014	0.0021	0.053	62	32 $\pm$ 2	26 $\pm$ 2	20 $\pm$ 1	14 $\pm$ 1
SHS-360/16	360	142	0.0006	0.016	0.0022	0.055	60	36 $\pm$ 3	32 $\pm$ 2	20 $\pm$ 1	16 $\pm$ 1
SHS-325/16	325	128	0.0006	0.016	0.0024	0.062	63	35 $\pm$ 3	32 $\pm$ 2	20 $\pm$ 1	18 $\pm$ 1
SHS-290/20	290	114	0.0008	0.02	0.0027	0.068	60	45 $\pm$ 3	36 $\pm$ 2	30 $\pm$ 1	22 $\pm$ 1
SHS-230/25	230	91	0.001	0.025	0.0033	0.085	60	55 $\pm$ 3	N/A	N/A	N/A
HS-380/14	380	150	0.0006	0.014	0.0021	0.053	62	33 $\pm$ 2	26 $\pm$ 2	20 $\pm$ 1	14 $\pm$ 1
HS-360/16	360	142	0.0006	0.016	0.0022	0.055	60	36 $\pm$ 3	32 $\pm$ 2	20 $\pm$ 1	17 $\pm$ 1
HS-325/16	325	128	0.0006	0.016	0.0024	0.062	63	35 $\pm$ 2	32 $\pm$ 2	20 $\pm$ 1	17 $\pm$ 1
HS-290/20	290	114	0.0008	0.02	0.0027	0.068	60	45 $\pm$ 2	36 $\pm$ 2	30 $\pm$ 1	21 $\pm$ 1
HS-250/20	250	98	0.0008	0.02	0.0032	0.082	65	44 $\pm$ 2	N/A	N/A	N/A
HS-230/25	230	91	0.001	0.025	0.0033	0.085	60	55 $\pm$ 2	N/A	N/A	N/A
HS-D500/19	500	197	0.0007	0.019	0.0013	0.032	39	45 $\pm$ 2	N/A	35 $\pm$ 2	25 $\pm$ 1
HS-D400/20	400	157	0.0008	0.02	0.0017	0.044	47	45 $\pm$ 2	39 $\pm$ 2	35 $\pm$ 2	N/A
HS-D325/24	325	128	0.0009	0.024	0.0021	0.054	48	55 $\pm$ 2	N/A	45 $\pm$ 2	N/A