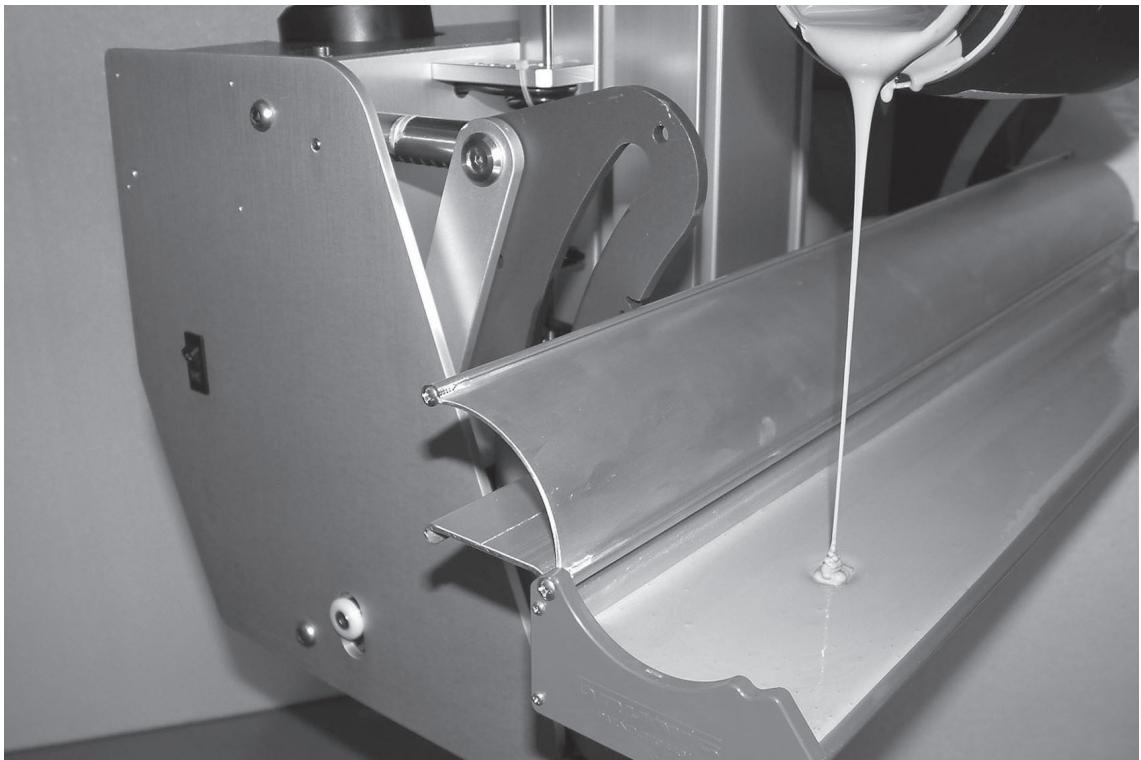


The patented G-COAT 401 provides a coating trough with various radii and a unique exchangeable edge



G-COAT 401

Grünig

Grünig-Interscreen AG
Ringgenmatt 14
CH-3150 Schwarzenburg
Switzerland

Phone +41 31 734 2600
Fax +41 31 734 2601
www.grunig.ch
mail@grunig.ch

G-COAT 401

Coating trough MODULAR Pat. no.0794461

Particular characteristics

- The requirements to be answered by modern printing forms are getting more stringent by the day. Until recently, high-quality printing screens could only be achieved by using expensive capillary films. Also, state-of-the-art exposure systems demand a highly uniform coat thickness without which an efficient production would be impossible.
- For the above-mentioned reasons, and based on our many years of experience in the field of coating technology, we have developed the completely new G-COAT 401 trough generation.
- The coating troughs can be used not only as manual coating troughs but also on all Grünig automatic coating machines.
- The concept is based on a modular system made up of several individual elements which can be combined according to the respective requirements and applications.

The following individual components are available:

Base profile

- The max. length of the base profile made of anodized aluminium is 7100 mm.

Dust protection cover

- The standard version of all the coating troughs with a max. length of 2000 mm includes a hinge-type dust protection cover TOP-COVER.

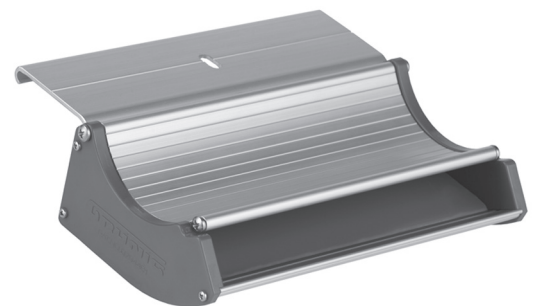
Coating edge

- You have the free choice of several MULTI-RADIUS aluminium coating edges (the available radii are 0,25/0,50/0,75 and 1,00mm) which allow easy confectioning as they can simply be pushed onto the base profile. This precise radius gradation allows an extremely precise control of the coating layer build-up, while at the same time reducing the coating time and allowing to realize any required copying layer. The quality with regard to the tolerances of the layer thickness and the surface roughness can thus be controlled with great precision, which enables the user not only to reduce his manufacturing costs but also to guarantee an efficient manufacturing process.

Type 1: Coating edge with 2 radii
r = 0,25 / 0,75 mm

Type 2: Coating edge with 2 radii
r = 0,50 / 1,00 mm

- The max. length of the coating edges made of anodized aluminium is 7100 mm.
- If spare coating edges are ordered together with the G-401 trough, they can be replaced at a later date.

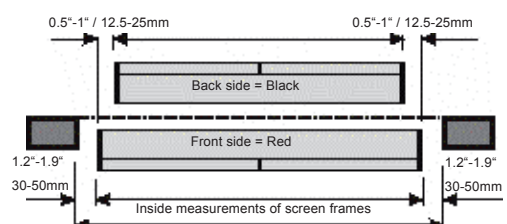


Material	Base profile Coating edge Dust cover	Aluminium profile EX-043 Aluminium profile EX-050 Aluminium profile EX-043
Trough radius	Coating edge	Type 1: 0,25 / 0,75 mm Type 2: 0,50 / 1,00 mm
Surface treatment	Base profile Coating edge Dust cover	natural anodized natural anodized natural anodized
Straightness of the base profile		straightened 0,4 mm/m
Trough contents	Volumetric capacity	1,2 lt/m
Trough end piece	End piece red End piece black	Squeegee side Print side

When ordering, please specify the maximum trough width;
The reference values are the following:

Screen frame size up to 2060 mm
Inner frame size - 60 mm = red trough (squeegee side RS)
Inner frame size - 85 mm = black trough (print side DS)

Screen frame size up to 7100 mm
Inner frame size - 100 mm = red trough (squeegee side RS)
Inner frame size - 150 mm = black trough (print side DS)



All measures in mm



The machine is in compliance with the EU machinery directives (CE conformity)

Technical changes are reserved
November 14